

4017 RS

TELEHANDLER



Performance

Rated Capacity	4000 kg
Maximum Lift Height	17.1 m
Load at Max Height	2500 kg
Load at max. reach (stabilizers down)	500 kg
Frame Leveling	10°
Lift Speed (boom retracted)	
Up	18.0 sec
Down	15.0 sec
Boom Speed	
Extended	26 sec
Retracted	22 sec
Top Travel Speed	25.0 km/h
Max. crowd	3.5 sec
Max. dump	2.5 sec
Engine	74.4 kW 3 speed
Break out force	5 kN
Outside Turning Radius (over tires)	3.85 m
Operating Weight	11500 kg

Standard Specifications

Engine

Make and Model	Deutz TCD 3.6 L4
No. of Cylinders	4
Displacement	3.6 L
Standard engine gross power	74.4 kW/100hp
Maximum torque at 1600 RPM	420Nm
Fuel Tank Capacity	150 L

Transmission

- 3 speed forward and reverse (1st: 5 km/h, 2nd: 12 km/h, 3rd: 25 km/h)

Axles

- Trunnion mounted planetary steer axles
- Integral steer cylinder
- High bias limited slip differential on front axle

Brakes

- Service brakes inboard wet disc brakes on front and rear axle
- Service brakes servo assisted
- Hydraulic parking brake

Tires

- Standard Mitas 14.00-24 TG02
- Optional Firestone 400/75-28
Goodyear 14.00-24 SGG foam-filled

Cab

- EROPS and FOPS fully glazed all weather cab
- 2 way adjustable mechanical suspension seat

Steering 4-Wheel

- Power steering with steering wheel spinner
- Two wheel/four wheel/crab steer with push button select facility

Instruments

- Maintenance indicator
- Water temperature gauge
- Fuel gauge
- Right-hand tilt and sway lever
- Hourmeter
- Boom lift and crowd on single joystick
- Engine oil pressure gauge

Hydraulic System-Implement

Capacity	100 L
• Pump type:	Gear pump
• Maximum gear pump flow	100 L/min
• Auxiliary hydraulic flow - intermittent	100 L/min

Accessories & Options

- Air conditioning (optional)
- Frame leveling
- Stabilizers
- Work lights (cab only)
- Road lights
- Rotating Beacon (optional)
- Load stability indicator (LSI)
- Rear retrieval hitch (optional)
- Brick guards (optional)

Attachments

Standard:	
Standard carriage	4000 kg
Standard coupler	Mechanical coupler
Pallet fork (4000 kg)	1200 mm x 60 mm x 100 mm
Multi-Purpose Bucket With Grab	2.4 m wide
4-1 Bucket	2.4 m, 1.0 m ³
Light Material Bucket	2.45 m, 1.8 m ³
Lifting Hook	4000 kg
Truss Boom	3.4 m, 1000 kg

4017 RS

TELEHANDLER

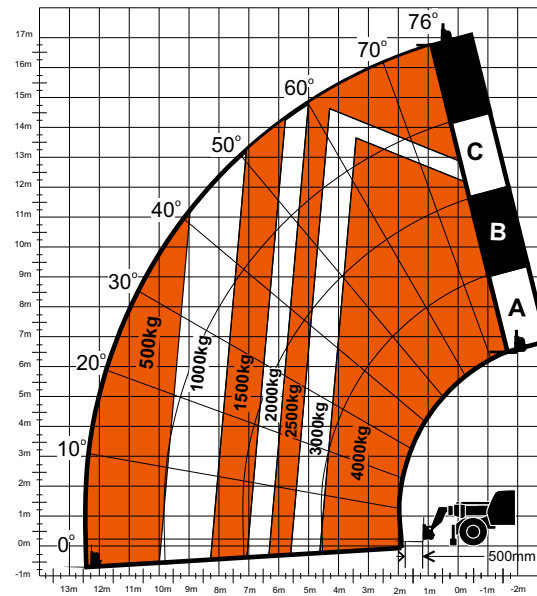
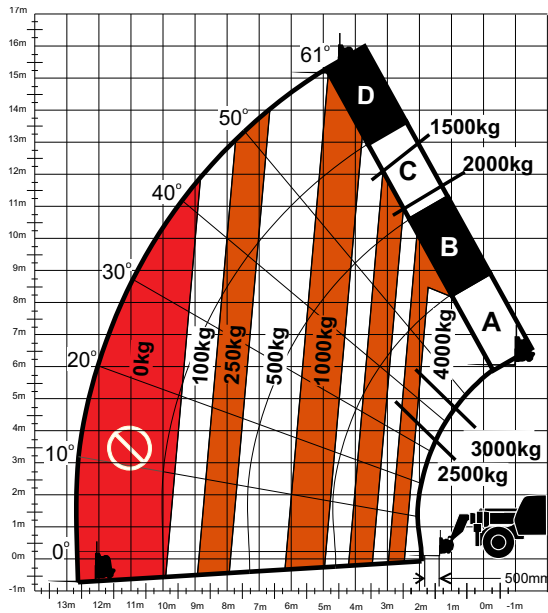


Dimensions

All dimensions are approximate.



Reach Dimensions



The JLG "1 & 5" Warranty

JLG Industries, Inc. backs its products with its exclusive "1 & 5" Warranty. We provide coverage on all products for one (1) full year, and cover all specified major structural components for five (5) years. Due to continuous product improvements, we reserve the right to make specification and/or equipment changes without prior notification. This machine meets or exceeds applicable OSHA Regulations in 29 CFR 1910.67, 29 CFR 1926.453, ANSI A92.5-2006, and CSA Standard CAN3-B354.2-M82, as originally manufactured for intended applications.

Part No.: 3132601
Printed in USA

JLG Industries, Inc.
1 JLG Drive
McConnellsburg, PA 17233-9533
Telephone 717-485-5161
Toll-free in US 877-JLG-LIFT
Fax 717-485-6417
www.jlg.com

An Oshkosh Corporation Company